

Navigating the Web Client

****Note** The web client supports the following browsers: Mozilla Firefox, Internet Explorer and Google Chrome. ****Microsoft Edge is not supported****

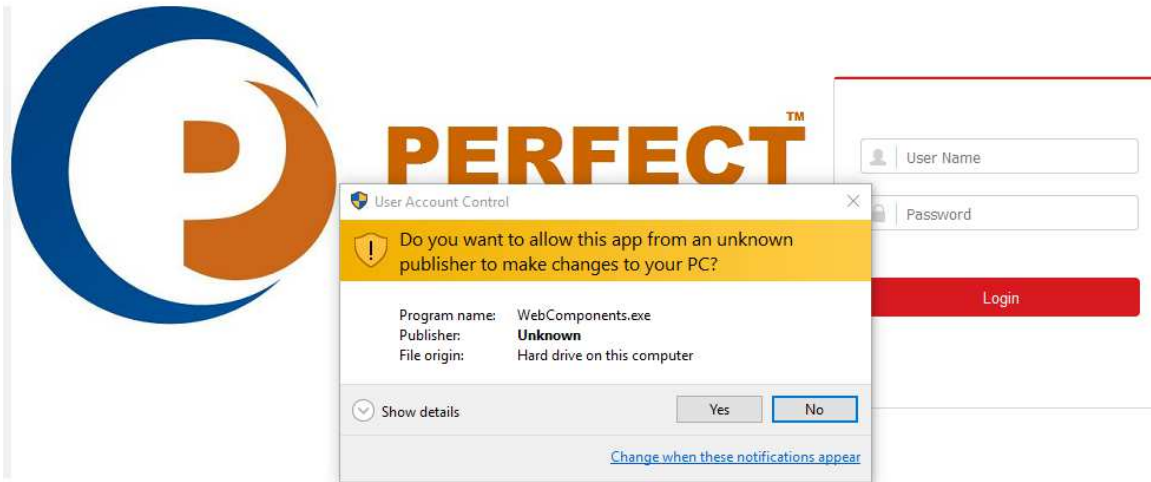
Firefox

Installing the plugin



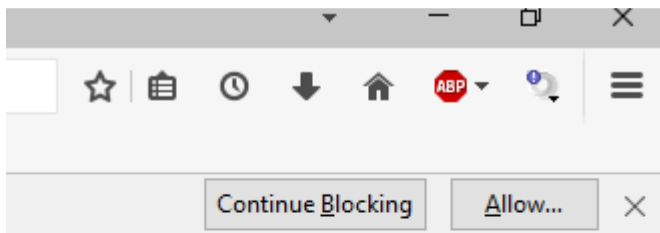
[Please click here to download and install the plug-in. Close the browser when installing the plug-in.](#)

- 1) When you have input the local IP address of your DVR/NVR in the firefox web browser Click on the red underlined text above to install the browser plugin.
- 2) Once downloaded, double click the executable and click on yes.

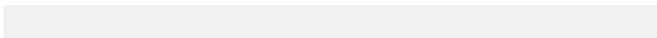


[Please click here to download and install the plug-in. Close the browser when installing the plug-in.](#)

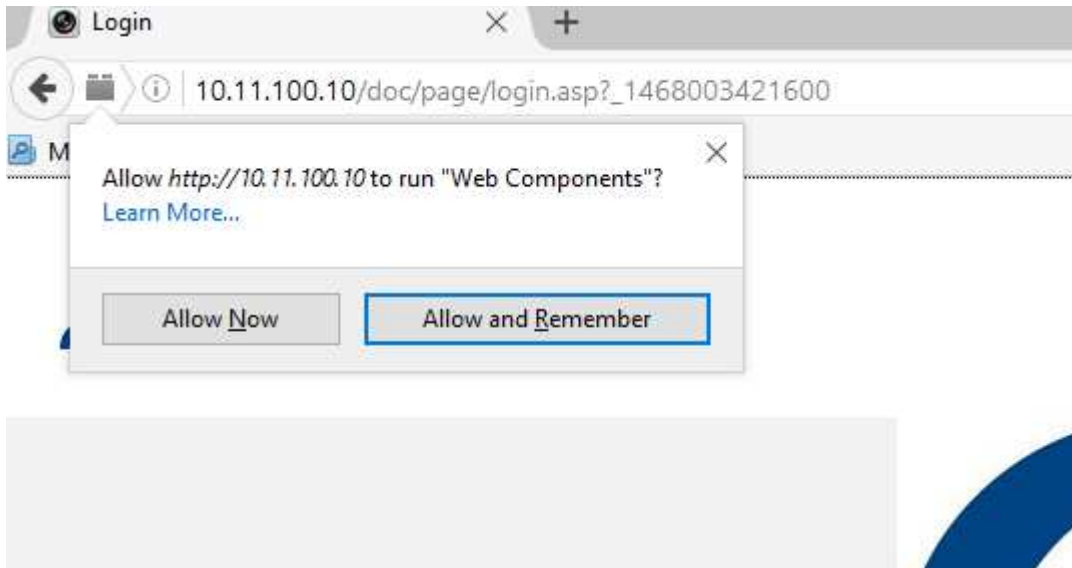
3) Click on Allow



English ▾

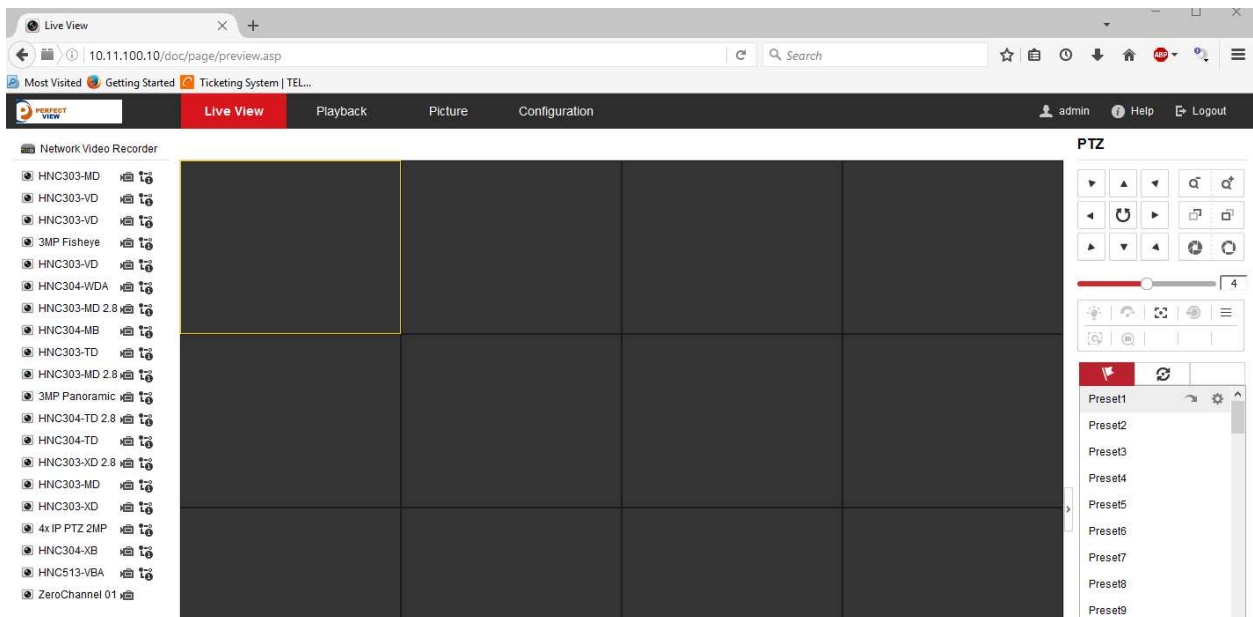


4) Click on Allow and remember



For Information on how to set up **Internet Explorer and **Google Chrome** please go to the end of this tutorial.**

5) Once these steps have been completed you can log in to the DVR and NVR and /or Cameras with the relevant user name and password.



6) This is the screen you should see when you log in.

Setting the Configuration

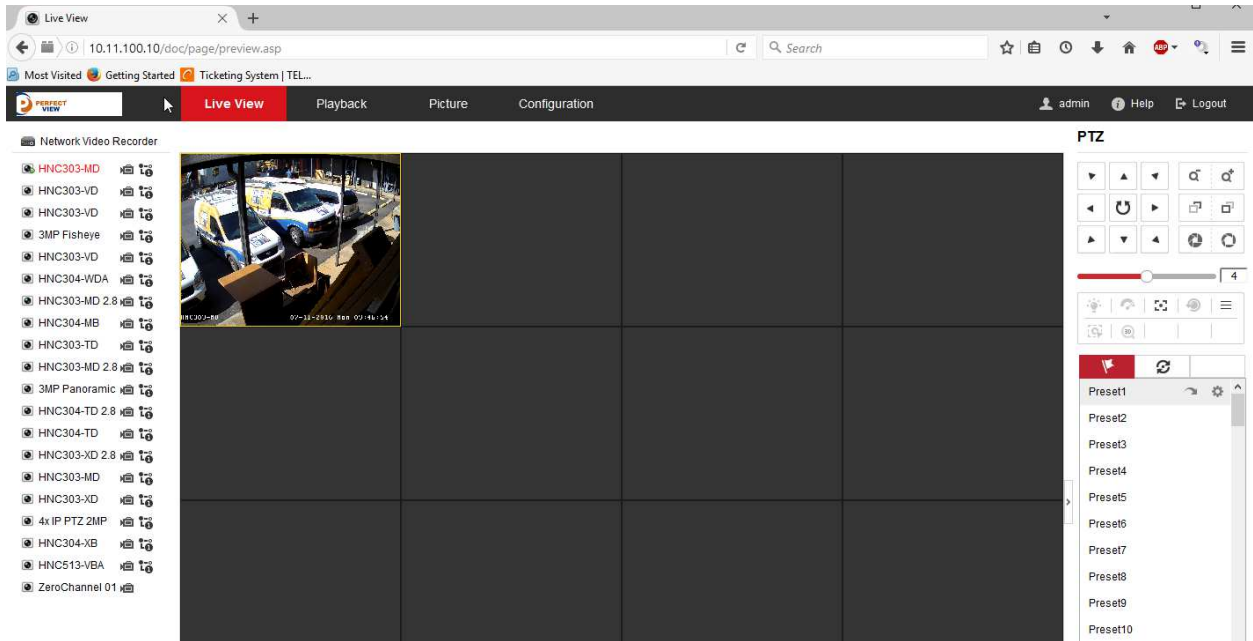
The screenshot displays the configuration interface for PerfectView. The top navigation bar includes 'Live View', 'Playback', 'Picture', and 'Configuration' (highlighted in red). The user is logged in as 'admin'. A left sidebar shows a tree view with 'Local' selected. The main content area is divided into three sections:


- Live View Parameters:**
 - Protocol: TCP, UDP, MULTICAST
 - Stream Type: Main Stream, Sub Stream, Transcoded Stream
 - Play Performance: Shortest Delay, Auto
 - Rules: Enable, Disable
 - Image Size: Auto-fill, 4:3, 16:9
 - Auto Start Live View: Yes, No
 - Image Format: JPEG, BMP
- Record File Settings:**
 - Record File Size: 256M, 512M, 1G
 - Save record files to:
 - Save downloaded files to:
- Picture and Clip Settings:**
 - Save snapshots in live view to:
 - Save snapshots when playback to:
 - Save clips to:

A red 'Save' button is located at the bottom of the configuration area.

- 1) Click on configuration tab and local and make sure the stream type is set to sub Stream so as to save resources. ****Important note, if this is not set correctly you could bring your PC to a crawl.****

Using Live View




- 1) If you look above you can see an image of a camera in live view. This is accomplished by highlighting the square you would like to see the image in and then on the left hand pane clicking play on the little camera icon when you do this you will see a small green play button like this.  You can more cameras to this view but you are at the mercy of the speed of your PC or device.

Playback feature

The screenshot shows the 'Playback' tab of the Perfect View Network Video Recorder. The interface includes a top navigation bar with 'Live View', 'Playback', 'Picture', and 'Configuration' tabs. A left sidebar lists various camera channels, with 'HNC303-MD' selected. The main area displays a 4x4 grid of video playback windows. A calendar on the top right shows July 2016, with the 11th highlighted. Below the calendar is a search bar. At the bottom, a timeline shows event markers for 'Command', 'Continuous', 'Alarm', and 'Manual' from 19:00 to 06:00. A 'Set playback time' control is also visible.

Firstly you need to click on the date you are looking for by using the calendar on the top right of your screen.


As with live view when you click on the square and bring in the camera by pressing play. 

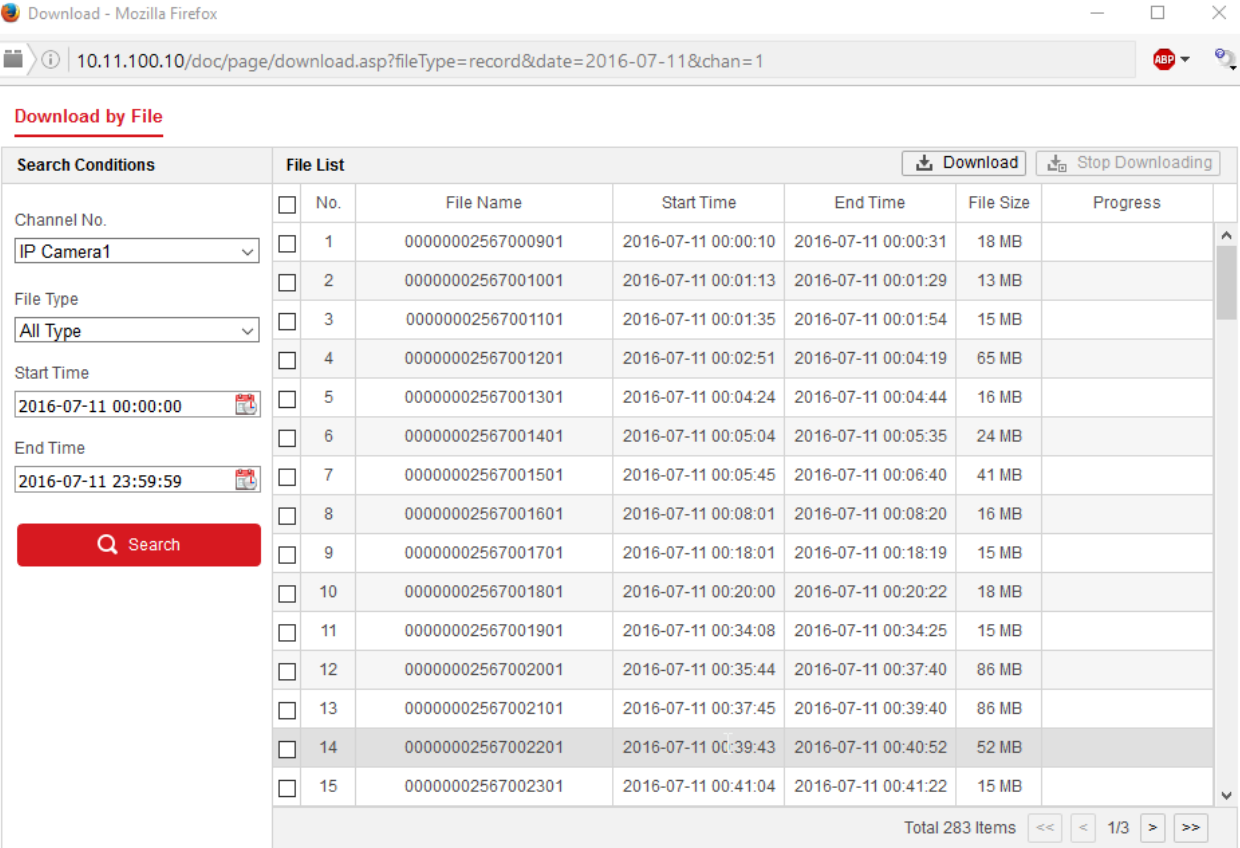
Below the playback windows and playback panel, you can see in red the events that are captured for that specific day.

This close-up view of the playback timeline shows the date '2016-07-11' and the time '00:00:10'. The timeline is marked with red vertical bars representing 'Alarm' events. A legend at the bottom identifies the event types: Command (green), Continuous (blue), Alarm (red), and Manual (yellow).

As you can see above the timeline is autoset to 00:00. (midnight) for that day. From here you can navigate to the time you are interested to see fir that particular day.

Downloading

By clicking on download  you can bring up all clips in downloadable form on any camera on any date.



Download by File

Search Conditions

Channel No.

File Type

Start Time

End Time

File List


<input type="checkbox"/>	No.	File Name	Start Time	End Time	File Size	Progress
<input type="checkbox"/>	1	00000002567000901	2016-07-11 00:00:10	2016-07-11 00:00:31	18 MB	
<input type="checkbox"/>	2	00000002567001001	2016-07-11 00:01:13	2016-07-11 00:01:29	13 MB	
<input type="checkbox"/>	3	00000002567001101	2016-07-11 00:01:35	2016-07-11 00:01:54	15 MB	
<input type="checkbox"/>	4	00000002567001201	2016-07-11 00:02:51	2016-07-11 00:04:19	65 MB	
<input type="checkbox"/>	5	00000002567001301	2016-07-11 00:04:24	2016-07-11 00:04:44	16 MB	
<input type="checkbox"/>	6	00000002567001401	2016-07-11 00:05:04	2016-07-11 00:05:35	24 MB	
<input type="checkbox"/>	7	00000002567001501	2016-07-11 00:05:45	2016-07-11 00:06:40	41 MB	
<input type="checkbox"/>	8	00000002567001601	2016-07-11 00:08:01	2016-07-11 00:08:20	16 MB	
<input type="checkbox"/>	9	00000002567001701	2016-07-11 00:18:01	2016-07-11 00:18:19	15 MB	
<input type="checkbox"/>	10	00000002567001801	2016-07-11 00:20:00	2016-07-11 00:20:22	18 MB	
<input type="checkbox"/>	11	00000002567001901	2016-07-11 00:34:08	2016-07-11 00:34:25	15 MB	
<input type="checkbox"/>	12	00000002567002001	2016-07-11 00:35:44	2016-07-11 00:37:40	86 MB	
<input type="checkbox"/>	13	00000002567002101	2016-07-11 00:37:45	2016-07-11 00:39:40	86 MB	
<input type="checkbox"/>	14	00000002567002201	2016-07-11 00:39:43	2016-07-11 00:40:52	52 MB	
<input type="checkbox"/>	15	00000002567002301	2016-07-11 00:41:04	2016-07-11 00:41:22	15 MB	

Total 283 Items << < 1/3 > >>

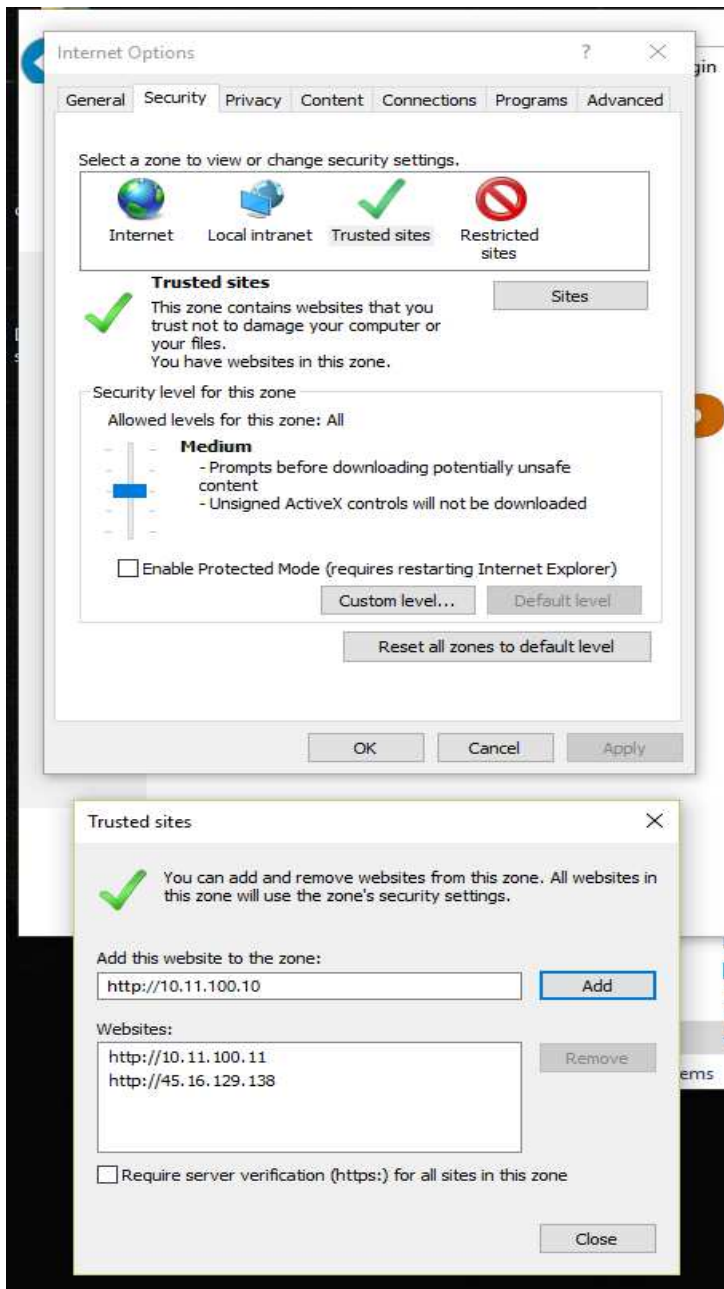
From this screen above you can select and download the file you would like to the destination you would like.

Internet Explorer

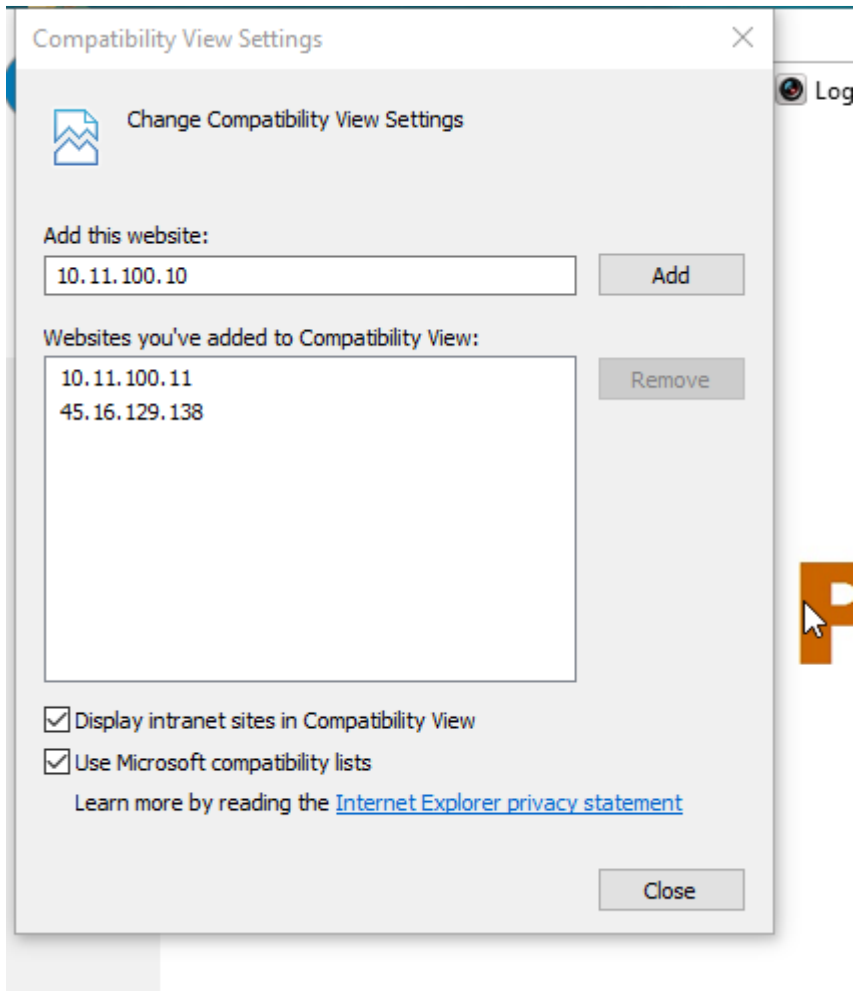
Logging in and navigating the browser in Internet Explorer is the exact same as detailed in the Mozilla Firefox tutorial, however there is specific information that must be set in Internet Explorer prior

Firstly navigate to the settings icon 

Then left click internet options, security tab, trusted sites and input the internal IP and External IP address of the DVR/NVR you are wanting to access.



You will also need to go into Compatibility view settings input the IP address in there as well. Click add to complete this process.

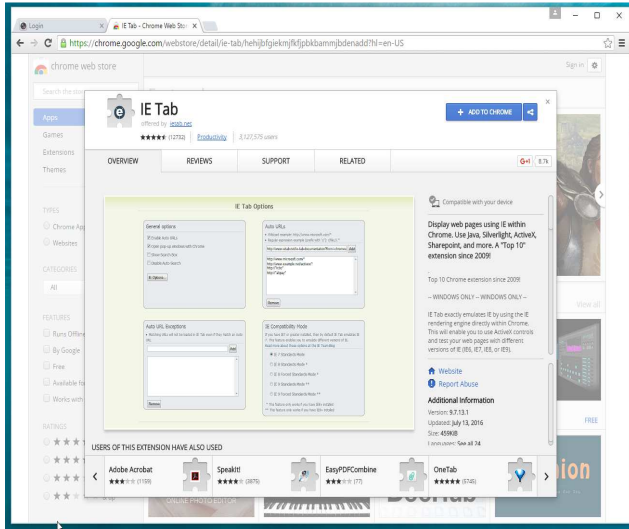



This completes the basic tutorial. If you need additional information. You can get help after logging into perfect view through the web browser and clicking on the help button in the top right part of the screen.

Google Chrome

Logging in and navigating Perfect View in Google Chrome is the exact same as detailed in the Mozilla Firefox tutorial, however there is a specific extension that must be set in Google Chrome prior

- 1) Go out to the Chrome web store and download the IE tab.



- 2) Once downloaded you will see this Symbol appear  Click on this symbol to run IE in Chrome.

